



SONEVA GILI RESORT

& SIX SENSES SPA



Location

The island is located at 4°17'N of 30°55'E, on privately owned Lankanfushi Island, North Male' atoll in the Republic of Maldives.

Soneva Gili Resort & Spa is the first all over-water Villa resort in the Maldives. The North Male' Atoll is one of 19 atolls that stretch over 800 kilometres through the Indian Ocean, with Lankanfushi being one of the 1,190 islands which make up the Maldives.

Soneva Gili is easily accessible by a 15 minute speed boat journey from Male' International Airport.



Crusoe Residences

Concept

Lankanfushi is one of the largest lagoons in the Maldives. Apart from the crystal clear waters, for which the Maldives is world renowned, the island and lagoon provide the unique experience of combining natural lush vegetation on the island and an abundance of fish in the surrounding waters.

The intimacy of the island and the unique design of the villas, set along jetties that stretch into the lagoon, create a most serene environment from which to discover the many dive sites to be discovered in the Male' atoll.

The water villa suites and residences have all the luxuries found in most exclusive resorts. However while offering all these facilities, the utmost care has been taken to make the resort environmentally-friendly and to reflect the harmony of life by the water's edge. Private sun decks sit just above the water level. Dining in your villa is a panoramic dream. Luxurious amenities are all thoughtfully placed in the drawer of the wooden desk. The minibar, personal safe, and entertainment centre with quadraphonic hi-fi are concealed in a hand built wooden cabinet.

Accommodation

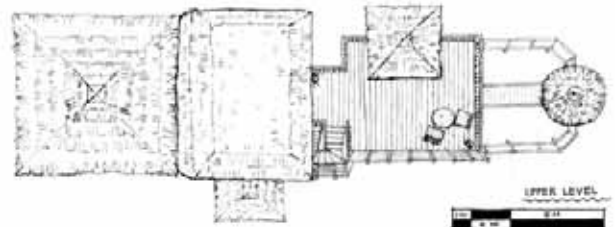
Three jetties stretch out from the island, giving access to villa suites and residences. Each suite and residence has been designed and built with the utmost attention to detail to ensure total guest comfort.

Soneva Gili Villa Suite (210 sq.m.)

29 water villas with air-conditioned bedrooms with king size bed, some with two twin beds, and a large open air living room with daybeds and a dining area.



Villa Suite Lounge



UPPER LEVEL



LOWER LEVEL

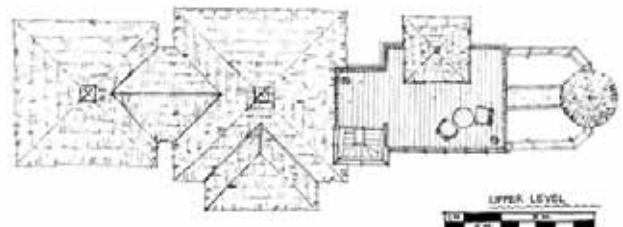
Soneva Gili Villa Suite floor plan

Soneva Gili Residence (250 sq.m.)

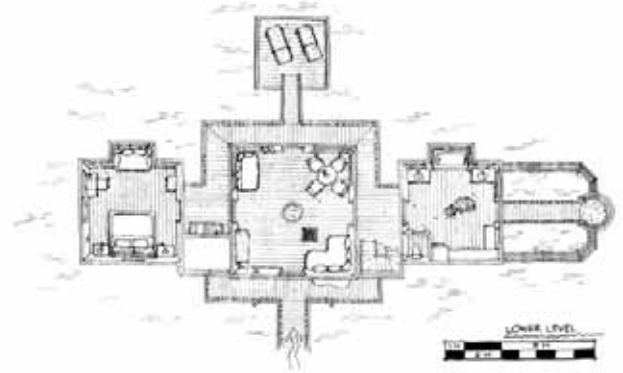
8 water residences secluded for privacy, with king size bed in an air-conditioned bedroom, large air-conditioned living room with seating arrangements and daybeds, and kitchenette.



Soneva Gili Residence



UPPER LEVEL



LOWER LEVEL

Soneva Gili Residence floor plan

Crusoe Residence (250 sq.m.)

7 "stand alone" water residences for ultimate privacy with the same facilities as the Soneva Gili Residence. Accessible by its own personal rowing boat, or electrically operated pontoon boats to transfer guests to the jetty.



Restaurant

Guest Room Features

- All villas have a roof top sun deck with daybed and two dining alternatives, and an over water sun deck with sun loungers.
- All villas are fitted with ceiling fans and air-conditioning in the bedroom, a mini bar, There is an espresso machine, personal safe and hairdryer and all 5-star standard amenities.
- All villas have CD Hifi stereo, satellite television and DVD/CD player.
- All villas have an open-air private bathroom with separate glass-walled shower area, and a bathtub.
- Bicycles are provided for all rooms.



Sun deck

Food & Beverage

At Soneva Gili we pride ourselves not just on the quality of our food and service but on the enjoyment of the dining experience itself. At Soneva Gili, open air dining can be romantic, private and unique. A moonlit dinner on the sun deck of your villa, breakfast in the living room of your residence, or lunch over the water in the all-over-water bar - the settings are as memorable as the cuisine.

Soneva Gili presents the same standard of food service that has made Soneva Fushi the best leisure hotel in the world. From the fine wines to the excellent malts we have achieved a reputation of providing our guests unique dining experiences.

Guest Services & Facilities

Six Senses Spa at Soneva Gili

Our professional beauty therapists and masseurs provide a holistic experience in a unique facility set over the turquoise blue lagoon. Gaze at the waters below, through a glass-paneled floor whilst being massaged. An extensive number of treatments are available to pamper guests, such as the specially designed jet lag treatment to relieve the stress of the long journey.

In our pursuit of detail we have carefully blended the modern creature comforts with which we have difficulty living without, with a simple and original environmentally-friendly lifestyle that many desire to enjoy every day, but can only enjoy at Soneva Gili Resort and Spa.

Recently Soneva Fushi introduced Ayurvedic treatments under the supervision of a fully qualified Indian Ayurvedic doctor.



Spa

Sports & Recreation

PADI Dive School, speedboats, water skiing, snorkeling, swimming pool, windsurfing and hobiecat sailing, canoeing, tennis court, volleyball, badminton, table tennis, boules & jogging, many board-games, Six Senses Spa (beauty and body treatments, steam rooms, sauna and gym).

Service & Facilities

One main restaurant. One over water bar and restaurant. Villa dining, library & internet access, conference facilities, gift shop & jewelry boutique, laundry and valet service, video and Compact Disc library, baby-sitting and child minding. The resort also features its own organic vegetable garden.

Excursions

Private breakfast on pontoon boat; cultural excursions to nearby village islands and Male', island hopping by speedboat; moonlit dinner at the sandbank; sunset cruise in local Maldivian Dhoni.



Scuba diving



SONEVA RESORTS

Intelligent Luxury.

Sales Offices:

Sales Offices:

Australia
Tel : +61 (0) 7 5524 9861
Fax : +61 (0) 7 5524 9718
e-mail: admin@wr.com.au

Eastern Europe
Tel : +(420) 221 667 328
Fax : +(420) 221 667 336
e-mail: vincent@artoftravelworldwide.com

France
Tel : +33 1 47 70 7422
Fax : +33 1 47 70 7421
e-mail : six-senses@tropic-travel.com

Germany
Tel : +49 (0) 6102 799 68 13
Fax : +49 (0) 6102 81 53 05
e-mail : Six.Senses@Asian-Oriental.de

Hong Kong
Tel : +852 8106 7610
Fax : +852 2849 8325
e-mail : jc@deliveringasia.com

India
Tel : +91 (0) 22 5630 8785
Fax : +91 (0) 22 5630 8780
e-mail : soneva@vsnl.com

Italy
Tel : +39 031 263047
Fax : +39 031 262085
e-mail : sixsenses@clubsn.com

Japan
e-mail : an@sixsenses.com

Nordic Region
Tel : +46 (0) 8545 51512
Fax : +46 (0) 8545 51519
e-mail: lena@ams.a.se

Singapore
Tel : +65 6226 1812
Fax : +65 6220 6912
e-mail : jimmy@sixsenses.com

Spain
Tel : +34 91 639 8504
Fax : +34 91 639 8506
e-mail : sixsenses-es@adsum.ws

Thailand
Tel : +66 (0) 2631 9777
Fax : +66 (0) 2653 1933
e-mail : rsvn@sixsenses.com

UAE
Tel : +97 14 227 9586
Fax : +97 14 221 6579
e-mail : kkjab@emirates.net.ae

U.K.
Tel : +44 (0) 151 226 1000
Fax : +44 (0) 151 226 1001
e-mail : sales-europe@sixsenses.com

USA
Tel : +(949) 640 1198
Fax : +(949) 720 8169
e-mail : joann@sixsenses.com

www.sixsenses.com/soneva-gili



GDS ACCESS CODES :

Amadeus LX MLESFR Sabre/Abacus LX 22048
Apollo/Galileo LX 74090 Worldspan LX MLESO



SONEVA GILI RESORT

A SIX SENSES SPA

Mailing address:
2nd Floor
4/3 Faamudheyri Magu
Male', Maldives
TEL: +960 440 304
FAX: +960 440 305
e-mail: sonresa@sonevagili.com.mv

Managed by Six Senses Hotels,
Resorts and Spas

